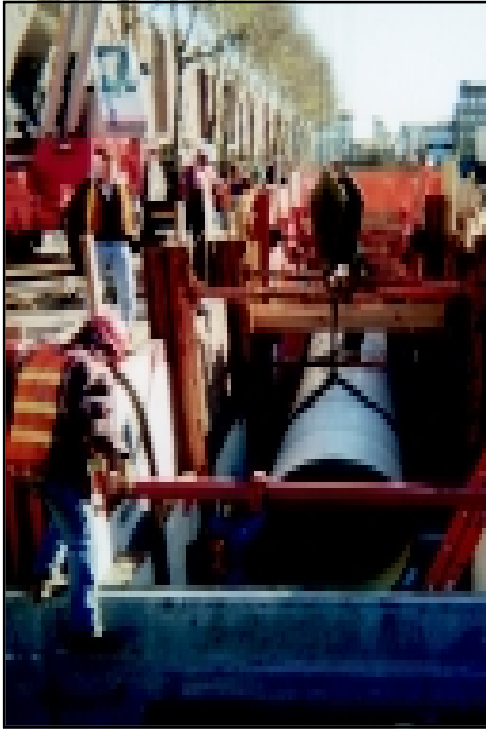


# If We Can Make It There... We'll Make It Anywhere



**New York's newest water main - their first lined with Corropipe II PW.**

Down by Battery Park, in fact, down below the street, just a few blocks south of New York's World Trade Center, this "hell of a town" is installing a "hell of a lining" in their latest water main - Madison Chemical's Corropipe II PW.

The New York State Department of Transportation is widening Manhattan's West Side Highway which runs along the Hudson River. Before the pavement is laid, the city is putting in a new steel water main. The New York City

Department of Design & Construction (DDC) is supervising both the design and installation of the pipeline.

New York's DDC is working closely with pipe manufacturer L.B. Foster Company to complete the project. The DDC's specifications indicate that Madison's Corropipe II PW is one of three acceptable pipe lining solutions.

L.B. Foster selected Madison's Corropipe II PW. The company, a seasoned veteran in the application of polyurethane and a Madison Approved Applicator, fabricated and lined roughly a mile of 48" and 36" steel pipe for the project.

Jeff Gardner, Project Manager for L.B. Foster explained why they use Madison's polyurethane linings: "The production benefits of the Madison product are what keep us using it time after time. We know that we can apply coating in the morning, conduct QA inspection and ship out a quality product in the afternoon, even in cold weather."

One of the many advantages of using Madison's polyurethane lining rather than traditional pipe lining systems is its ability to cure

at very low temperatures. This feature allows the DDC project to continue even through some of New York's coldest winter days.

The use of Madison's two component, 100% solids polyurethane lining represents a significant change in technology for the DDC. The last large water main installed in New York city was lined with conventional water grade epoxy from an American paint company. Everyone involved in using Corropipe II PW for this project, from the owner, to the specifier, to the fabricator, to the installer, agrees on at least one fact—this is definitely not paint!

A city as tough as New York needs a strong pipe lining. "This feels much harder and more durable than epoxy," is a common remark by workers on the job site, and they're right. When compared to epoxy, Madison's Corropipe II PW offers superior adhesion, permeability resistance and overall performance.

Madison's high performance polyurethane coating and lining systems have made it in the city of New York, and you know what they say, if we can make it there, we'll make it anywhere.

**Madison Chemical Industries, Inc.**

**The World Leader for Infrastructural Coatings™**

**Phone: (905) 878-8863 Fax: (905) 878-1449 e-mail: [sales@madisonchemical.com](mailto:sales@madisonchemical.com)**

**490 McGeachie Drive, Milton, Ontario, Canada L9T 3Y5 [www.madisonchemical.com](http://www.madisonchemical.com)**